

tool

CATALOG



exclusive distributor



METALFORMING Architectural Machines

100 INTERNATIONAL DRIVE PEACHTREE CITY, GA 30269
770.631.0002 TEL 770.631.7776 FAX
METALFORMING-USA.COM



THE WORLD OF STANDING SEAM WOULD NOT BE COMPLETE WITHOUT QUALITY, HIGH-PERFORMANCE HAND TOOLS FROM THE WORLD'S LEADING TOOL MANUFACTURERS. METALFORMING INC. INTRODUCES THE MOST-EXTENSIVE LINE YET OF PRECISION-MADE, FIELD-TOUGH EQUIPMENT FOR THE ARCHITECTURAL SHEET METAL AND METAL BUILDING PROFESSIONS, WITH PARTICULAR FOCUS ON THE ROOFING TRADE.

THESE TOP-OF-THE-LINE TOOLS ARE SLEEK, THEY'RE VERSATILE, THEY'RE EXTREMELY EFFECTIVE AND EFFICIENT, AND THEY ALSO HELP YOU CUT COSTS. FOR SNIPPING AND SEAMING, MARKING AND MEASURING, AND TACKLING TIGHT SPACES FROM ANY ANGLE IMAGINABLE, THE LEGENDARY EUROPEAN COMPANIES STUBAI AND RAU HAVE DEVISED A TOOL FOR EVERY OCCASION, EVERY CHALLENGE, EVERY BENEFIT. LOOK INSIDE FOR THE PIECES ESSENTIAL TO BOTH START-UP BUSINESSES AND SPECIALTY WORK. PLUS, WE'RE FEATURING THE LATEST IN HIGH-PRODUCTION, STATE-OF-THE-ART METAL FOLDING MACHINES AND ACCESSORIES FROM JORNS, SCHECHTL AND SCHLEBACH - EACH THE LEADER IN ITS CLASS.

FOR MORE INFORMATION, CONTACT METALFORMING INC., THE NORTH AMERICAN AUTHORITY IN METAL BUILDING AND ARCHITECTURAL SHEET METAL TECHNOLOGY, WITH ACROSS-THE-BOARD, PROFIT-MAKING SOLUTIONS FOR THE INDUSTRY'S 21ST CENTURY DEMANDS IN BRAKE FORMING, CUTTING AND SLITTING, AND STANDING SEAM.





Available in three lengths, for optimum cutting of metal sheets. Polished head, induction-hardened blades. Rockwell number: 54-56 HRC. Material: special steel.

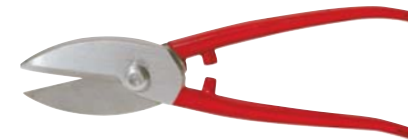
S UNIVERSAL TIN SNIPS		
vienna pattern		
Number	Length inches	Weight lbs.
2650 01	9"	1.26
2650 02	10.5"	1.60
2650 03	11.5"	2.13



For straight continuous cuts and exact curve cutting, reducing the strength required for cutting. Red plastic coated handle with safety grip. Cutting heads: special steel.

S COMPOUND ACTION SNIPS		
Number	Length inches	Weight lbs.
2681 01	10"	1.08

S UNIVERSAL TIN SNIPS		
lyon pattern		
Number	Length inches	Weight lbs.
2660 01	8"	1.26
2660 02	10"	1.60



Available in two lengths, for optimum cutting of metal sheets. Polished head, induction-hardened blades. Rockwell number: 56-58 HRC. Material: C45 carbon steel.

S COMPOUND ACTION SNIPS		
Number	Length inches	Weight lbs.
2691 01	10"	1.08
2701 01 R	10"	1.14
2706 01 L	10"	1.14



For straight continuous cuts and exact curve cutting, reducing the strength required for cutting. Red plastic coated handle with safety grip. Cutting heads: special steel.



Special tin snips for straight and curved cuts. Polished head, induction-hardened blades, separate left- and right-hand models. Rockwell number: 58-60 HRC. Material: C60 carbon steel.

S CIRCLE SNIPS		
Number	Length inches	Weight lbs.
2675 01	9.5"	0.55
2675 02	11.5"	0.66
2676 01	9.5"	0.55
2676 02	11.5"	0.66



Universal pliers, forged, with lap joint, red plastic coated handle, handle ends manufactured as screwdriver and punch, induction-hardened blade. Material: C45 carbon steel.

S TINSMITH'S PLIERS		
Number	Length inches	Weight lbs.
2790 01	11.5"	1.32

S TIN SNIPS		
Number	Length inches	Weight lbs.
2680 01	10.5"	1.60



Universal tin snips for exact curve cutting. Polished head, induction-hardened blades. Rockwell number: 60-62 HRC. Material: C60 carbon steel.

S STUBAI PLIERS		
Number	Length inches	Weight lbs.
2791 01	9.5"	0.99



Universal pliers, forged, with special large, polished head, red plastic coated handle, induction-hardened blade. Material: C45 carbon steel.



For long and straight cuts. Polished head, induction-hardened blades. Rockwell number: 60-62 HRC. Material: high-alloy tool steel, red plastic coated (11).

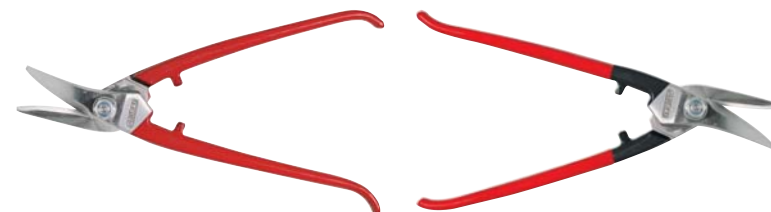
S TIN SNIPS		
pelican pattern		
Number	Length inches	Weight lbs.
2690 01	10.5"	0.77
2690 11	10.5"	0.77



For fast opening of standing seams and double seams. Forged, upper jaw with induction-hardened blade, lower jaw with prism, red plastic coated handle. Material: C45 carbon steel.

S SEAM OPENING PLIERS		
Number	Length inches	Weight lbs.
2795 01	9.5"	0.99

S COMBINATION TIN SNIPS		
Number	Length inches	Weight lbs.
2700 01 R	11"	1.32
2705 01 L	11"	1.32
2700 11 R	11"	1.36
2705 11 L	11"	1.36



For curve cutting and long cuts. Polished head, induction-hardened blades, separate left- and right-hand models. Rockwell number: 60-62 HRC. Material: high-alloy tool steel, red plastic coated (2700 11 and 2705 11).

S EAVES & GUTTER PLIERS		
with lap joint		
Number	Length inches	Weight lbs.
2827 01	11.5"	1.27



For adjusting gutter brackets. Forged, with lap joint, induction-hardened nose, red plastic coated handle. Material: C45 carbon steel.





For small-scale, precise seaming and folding. Forged, with lap joint. Entire tool quenched and tempered, polished head, slightly rounded edges, red plastic coated handle. Material: C45 carbon steel.

S STRAIGHT SEAMING PLIERS piccolo pattern			
Number	Width inches	Length inches	Weight lbs.
2829 01	.944"	7"	0.48



Forged, with box joint and teeth. Induction-hardened, slightly rounded 2.25" nose length guarantees perfect power transmission. Material: C45 carbon steel.

S FLAT NOSE PLIERS		
Number	Length inches	Weight lbs.
2810 02	10"	0.77

S SEAMING PLIERS, 45° ANGLE piccolo pattern			
Number	Width inches	Length inches	Weight lbs.
2830 01	.944"	7"	0.49



Forged, with lap joint. Entire tool quenched and tempered, polished head, slightly rounded edges, red plastic coated handle. Material: C45 carbon steel.

S ROUND NOSE PLIERS with lap joint		
Number	Length inches	Weight lbs.
2815 01	9"	0.71



Forged, with lap joint and teeth. Induction-hardened, slightly rounded nose guarantees perfect power transmission. Material: C45 carbon steel.



Special flat nosed pliers, forged, chamfered edges, polished mouth, box joint, red plastic coated handle. Available with teeth (01) or without teeth (11). Material: C45 carbon steel.

S FLAT NOSE PLIERS 01 with teeth, 11 without teeth		
Number	Length inches	Weight lbs.
2800 01	9"	0.79
2800 11	9"	0.79



Straight, forged, with box joint. Mouth and jaws quenched and tempered, slightly rounded edges, red plastic coated handle. Material: C45 carbon steel.

S SEAMING PLIERS straight			
Number	Depth inches	Length inches	Weight lbs.
2820 01	.708"	10.5"	1.05
2820 04	1.57"	10.5"	1.21
2820 02	2.36"	10.5"	1.27
2820 03	3.149"	12.5"	2.11

S FLAT NOSE PLIERS with lap joint		
Number	Length inches	Weight lbs.
2805 01	9"	0.79



Special flat nosed pliers, forged, with lap joint and teeth. Chamfered edges, polished mouth, red plastic coated handle. Material: C45 carbon steel.

S STRAIGHT SEAMING PLIERS with lap joint			
Number	Width inches	Length inches	Weight lbs.
2820 51	2.36"	10.5"	1.16
2820 53	3.14"	12.5"	2.11
2820 54	3.93"	12.5"	2.42



Straight, forged, with lap joint. Mouth and jaws quenched and tempered, slightly rounded edges, red plastic coated handle. Material: C45 carbon steel.



Forged, with box joint. Induction-hardened, slightly rounded nose guarantees perfect power transmission. Available with teeth (01) or without teeth (11). 1.77" nose length. Material: C45 carbon steel.

S ROUND NOSE PLIERS 01 with teeth, 11 without teeth		
Number	Length inches	Weight lbs.
2810 01	9"	0.71
2810 11	9"	0.71



Forged, with box joint. Mouth and jaws quenched and tempered, slightly rounded edges, red plastic coated handle. Material: C45 carbon steel.

S SEAMING PLIERS, 45° ANGLE with box joint			
Number	Width inches	Length inches	Weight lbs.
2821 01	.708"	9.5"	1.05
2821 04	1.57"	9.5"	1.21
2821 02	2.36"	9.5"	1.27
2821 03	3.14"	11.5"	2.11

S SEAMING PLIERS special steel		
Number	Length inches	Weight lbs.
2784 01	5.51"	1.76



Forged, quenched and tempered, black varnishing. With 3.15" insertion depth. Material: special steel.



S SEAMING PLIERS, 45° ANGLE with lap joint			
Number	Width inches	Length inches	Weight lbs.
2821 50	1.57"	10"	1.05
2821 51	2.36"	7"	1.21
2821 53	3.14"	11.5"	1.27
2821 54	3.93"	11.5"	2.11



Forged, with lap joint. Mouth and jaws quenched and tempered, slightly rounded edges, red plastic coated handle. Material: C45 carbon steel.





Forged, with box joint. Mouth and jaws quenched and tempered, slightly rounded edges, red plastic coated handle. Material: C45 carbon steel.

S SEAMING PLIERS, 90° ANGLE with box joint			
Number	Width inches	Length inches	Weight lbs.
2822 04	1.57"	9"	1.10
2822 01	2.36"	9"	1.50



For easy corner seaming. Forged, with lap joint. Mouth and jaws quenched and tempered, slightly rounded edges, red plastic coated handle. Material: C45 carbon steel.

S CORNER SEAMING PLIERS with lap joint			
Number	Width inches	Length inches	Weight lbs.
2824 51	2.36"	11"	1.54

S SEAMING PLIERS, 90° ANGLE with lap joint			
Number	Width inches	Length inches	Weight lbs.
2822 51	2.36"	9"	1.50



Forged, with lap joint. Mouth and jaws quenched and tempered, slightly rounded edges, red plastic coated handle. Material: C45 carbon steel.

S ROUND SEAMING PLIERS with lap joint			
Number	Width inches	Length inches	Weight lbs.
2825 01	.7086"	9.5"	1.1



For curved seams. Forged, with lap joint. Mouth and jaws quenched and tempered, slightly rounded edges, red plastic coated handle. Material: C45 carbon steel.



Forged, with lap joint. Mouth and jaws quenched and tempered, slightly rounded edges. Material: stainless steel.

S STRAIGHT SEAMING PLIERS stainless steel with lap joint			
Number	Width inches	Length inches	Weight lbs.
2820 60	2.36"	10.5"	1.21



Milled, with 50mm width for closing standing seams. Mouth and jaws quenched and tempered, slightly rounded edges, red plastic coated handle. Material: C45 carbon steel.

S DOUBLE SEAMING PLIERS			
Number	Width inches	Length inches	Weight lbs.
2826 01	2"	11.5"	2.00

S SEAMING PLIERS, 45° ANGLE			
Number	Width inches	Length inches	Weight lbs.
2821 60	2.36"	10"	1.27



Forged, with lap joint. Mouth and jaws quenched and tempered, slightly rounded edges. Material: stainless steel.

S CORNER SEAMING PLIERS with box joint			
Number	Width inches	Length inches	Weight lbs.
2823 10	3.93"	19.5"	3.96
2823 12	4.72"	19.5"	4.19
2823 14	5.51"	19.5"	4.19
2823 16	6.29"	22"	6.17
2823 18	7.08"	22"	6.61
2823 20	7.87"	22"	6.83



Especially useful on moldings. Forged, surface ground, with box joint. Mouth and jaws quenched and tempered, black varnished handle. Material: C45 carbon steel.



Forged, with lap joint. Mouth and jaws quenched and tempered, slightly rounded edges. Material: stainless steel.

S SEAMING PLIERS, 90° ANGLE			
Number	Width inches	Length inches	Weight lbs.
2822 60	2.36"	9"	1.34



Forged, surface ground, with box joint, mouth 45° beveled on one side. Mouth and jaws quenched and tempered, black varnished handle. Material: C45 carbon steel.

S SEAMING PLIERS, 45° BEVELED beveled on one side			
Number	Width inches	Length inches	Weight lbs.
2823 26	7.08"	22"	6.61

S SEAMING PLIERS, 45° ANGLE			
Number	Width inches	Length inches	Weight lbs.
2828 01	3.14"	12.5"	1.90



For high seams, with pointed angles at mouth specially designed for seaming corners. Forged, with box joint. Mouth and jaws quenched and tempered, slightly rounded edges, red plastic coated handle. With 3.15" insertion depth. Material: C45 carbon steel.

S SEAMING PLIERS, 30° ANGLE			
Number	Width inches	Length inches	Weight lbs.
2823 54	5.51"	17.5"	4.07
2823 56	6.29"	20.5"	6.23
2823 58	7.08"	20.5"	6.39



Forged, surface ground, with box joint, mouth 30° angled. Mouth and jaws quenched and tempered, black varnished handle. Material: C45 carbon steel.





Forged from special steel (01 one piece; 02 forged and welded). Prism height 25mm. Material: tool steel.



S ROOFING SEAMER			
straight			
Number	Width inches	Length inches	Weight lbs.
2780 01	4.72"	6.5"	5.03
2780 02	5.51"	7.75"	4.37

S SINGLE SEAMER			
Number	Width inches	Length inches	Weight lbs.
2780 03	5.51"	5.5"	3.31



Shovel-only seamer forged from special tool steel.



Polished working surfaces, chamfering angle 5°-7°; hardened steel prisms at heights of 25mm + 30mm. Material: C45 carbon steel.

S DOUBLE ROOFING SEAMER			
Number	Width inches	Length inches	Weight lbs.
2781 01	5.51"	5.5"	6.61

S SINGLE ROOFING SEAMER			
Number	Width inches	Length inches	Weight lbs.
2781 02	6"	6.25"	3.75



Polished working surfaces, chamfering angle 5°-7°; hardened steel prism at heights of 25mm + 30mm. Material: C45 carbon steel.



Made of PE, with prism heights of 1" + 1/2".



S PLASTIC SEAMING PIECE			
Number	Square inches	Length inches	Weight lbs.
2788 01	5.11"	12"	1.10

S PLASTIC SEAMING BOARD			
Number	Width inches	Length inches	Weight lbs.
2787 01	20"	6.5"	2.09
2787 02	20"	7.75"	2.31



Made of PE, white with handle.



Forged from special steel, quenched and tempered, black varnishing. Material: C45 carbon steel.

S CORNER ROOFING SEAMER		
Number	Length inches	Weight lbs.
2782 01	4.25"	3.75

S SEAMING CHISEL		
Number	Seam inches	Weight lbs.
2783 04	.1875"	0.99
2783 06	.25"	0.97
2783 08	.3135"	0.95
2783 10	.375"	0.93
2783 12	.5"	0.90



Optimum tool for seaming. Forged, quenched and tempered, polished working surface, black varnishing. Material: special steel.

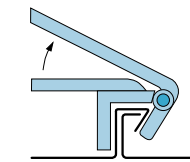


Roller head with alloyed steel rolls, simple bending angle adjustment with wing screw, tubular handles coated with non-slip rubber grips.

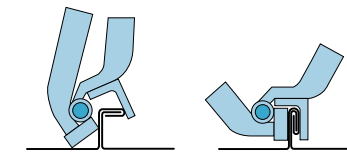
S GUTTER HANGER BENDER			
non-slip rubber grips			
Number	Width inches	Length inches	Weight lbs.
2824 11	2"	23"	6.06
2824 10	2.5"	27"	6.97

S SINGLE LOCK SEAMER			
Number	Width inches	Length inches	Weight lbs.
2824 12	8.66"	8.62"	4.34

For locking first stage of single-lock seams. Ideal for locking short or long runs of fascia panels.



For locking first stage of double-lock seams. Ideal for locking short or long runs of fascia panels.



S DOUBLE LOCK SEAMER			
Number	Width inches	Length inches	Weight lbs.
2824 15	8.66"	8.62"	4.34

S DRIP EDGE BENDER			
Number	Width inches	Length inches	Weight lbs.
2824 13	9.84"	8.62"	3.74

Can make clean bend of more than 90° without marks. Bends flat-seamed standing seam around and under drip edge.





Companion to Drip Edge Bender. Permits clean, fast locking of drip edge without tool marks.

S DRIP EDGE SEAMER

Number	Width inches	Length inches	Weight lbs.
2824 14	7.87"	18"	4.34



With bevel-ground edges, 6mm thick. Material: tool steel.

S SLATER'S ANVIL

Number	Length inches	Weight lbs.
2760 01	12"	1.10

S SEAMING HAMMER

Number	Width inches	Length inches	Weight lbs.
1614 01	1.37"	6.5"	3.31



With steel tube butt and rubber grip. Material: tool steel.

S CURVED SLATER'S ANVIL

Number	Length inches	Weight lbs.
2761 01	12"	1.10



With bevel-ground edges, 6mm thick. Material: tool steel.

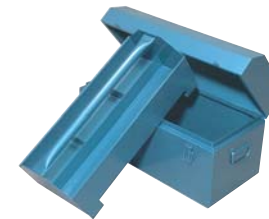


Made of impact resistant polyethylene, with round edges. Flared, non-varnished ash handle (fixed to head) provides excellent grip. Replacement handle (20).

S PLASTIC WEDGE HAMMER

round edge

Number	Length inches	Weight lbs.
2785 01	12"	1.21
2785 20	12"	0.30



Various tools at your fingertips, thanks to detachable insert and device for hanging on slating batten.

S TOOL CASE WITH INSERT

Number	Width inches	Length inches	Weight lbs.
4994 10	12"	28"	21.8

S PLASTIC HAMMER

rectangular

Number	Length inches	Weight lbs.
2785 02	12"	1.32
2785 03	12"	1.11



Made of impact resistant polyethylene, with rectangular hammer face. Flared, non-varnished ash handle (fixed to head) provides excellent grip.



S PLASTIC HAMMER

speckled

Number	Length inches	Weight lbs.
2785 04	12"	1.21



Colored face will not harm sheet metal. Made of impact resistant polyethylene, with rectangular hammer face. Flared, non-varnished ash handle (fixed to head) provides excellent grip.

S SLATER'S HAMMER

Number	Length inches	Weight lbs.
2755 01 R	7.75"	1.32
2755 02 L	7.75"	1.32



Forged, with leather handle. Right- or left-handed models. Material: C45 carbon steel.



S 40 PIECE TOOL SET

without case

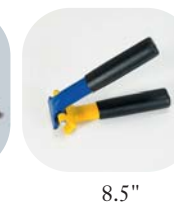
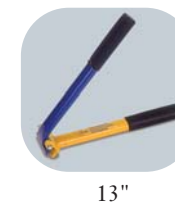
Number	Width inches	Length inches	Weight lbs.
S2839 40	NA	NA	46.29

Complete family of selected Slubai tools, for full spectrum of seaming demands.

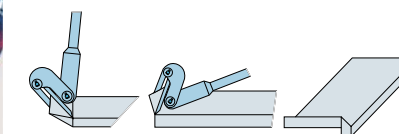


R SQ.SEAM FOLDER SEMICIRCLE

Item	Length inches	Width inches	Weight lbs.
edp 119	13.04"	2.57"	7.70
edp 127	8.5"	2.57"	7.70



For semicircular dormer windows, the ultimate tool for joining prefabricated SPM profiles. Perfect for areas with limited access. Even small-radius windows lockseam with ease. Can also tack lengthwise beads to prevent withdrawal from folding press.



R LEDGE EDGER

Item	Length inches	Width inches	Weight lbs.
edp 110	2.64"	5.5"	2.20

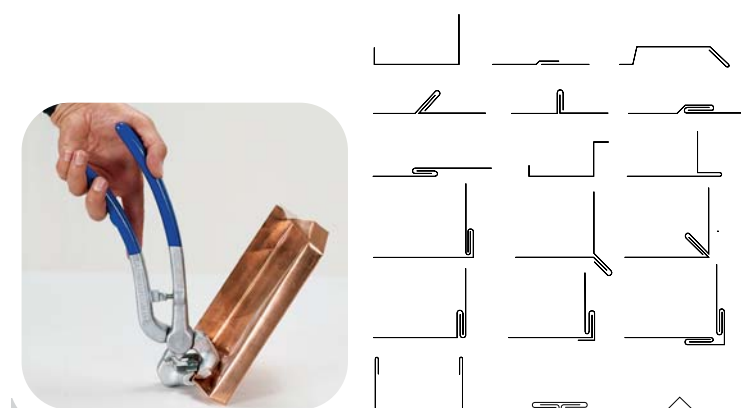
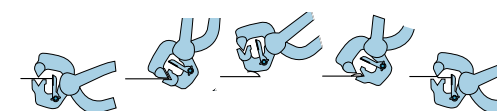
Extremely practical for bending ledge gussets at 45° or 60° angles. Features automatic bending of gussets at outer sill ends.

R SNAKER

Item	Length inches	Width inches	Weight lbs.
edp 114	13.43"	1.58"	1.76



Accurately taper any tube caliber simply by setting a few 2.77" pleats with this unique tool. Large supporting surface ensures high stability of joined tubes.



R SINGLE-HANDED EDGER

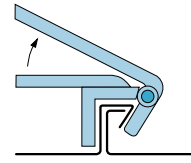
Item	Length inches	Width inches	Weight lbs.
edp 108	11.85"	2.57"	1.54

All-around tool for roofers, plumbers, tin smiths and panel beaters. Highly suitable for sheet metal up to .032". Adjustable stops support freehand edging from .28" to .79". With tool width of 2.37", bend any length sheet metal.



R SQUARESEAM FOLDER

Item	Length inches	Width inches	Weight lbs.
edp 111	15.5"	8.69"	4.41



Manually operated, joins mechanical lock panels. Smooth lead-on leaves no marks at transitions. Ergonomic lever placement for easy handling, especially on extreme angular sheathing. Can be used for vertical and horizontal beads. Makes single lock.



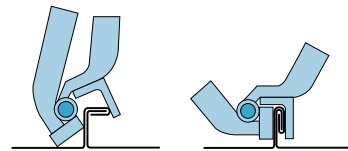
R SQ.SEAM FOLDER UPRIGHT

Item	Length inches	Width inches	Weight lbs.
edp 128	28.5"	8.69"	7.70

For easy, simple and quick seam closing, manual Squareseam Folder is more economical than a machine. Adjustable handles for efficient use and transport. Makes single lock.

R TWIN SQUARESEAM FOLDER

Item	Length inches	Width inches	Weight lbs.
edp 117	19"	8.69"	5.50



Ingenuous system allows simple and quick shaping of locked squareseam into double-seam in just one operation.



R TWIN SQ.SEAM FOLDER UPRIGHT

Item	Length inches	Width inches	Weight lbs.
edp 131	28.5"	8.69"	7.90

Simple and efficient tool for shaping squareseam into double-squareseam. Adjustable handles for optimal use and easy transport at minimum size.

R SHEETBENDING JAWS

Item	Length inches	Width inches	Weight lbs.
edp 101	19.75"	39.5"	30.90
edp 102	19.75"	19.75"	15.20
edp 103	13.5"	12"	11.00

Make one bend on endless band tin quickly and accurately - and on site. Effortlessly construct leak-proof and weldless gutters, ducts, high wall sheathing, wall connections, etc.

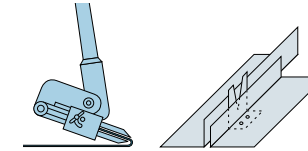


R TILE EDGER

Item	Length inches	Width inches	Weight lbs.
edp 115	27.5"	10"	6.60
edp 116	14"	3"	1.60



Unique tool for building leak-proof tile edges at any angle. Based upon roof slope, the tile bending angle may be determined by using math or drawing method. Each tool delivered with detailed instructions. Tongs from 2.76" to 9.88".



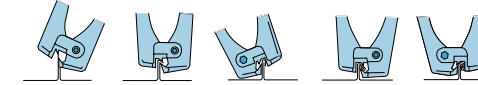
R TIN EDGE JAWS

Item	Length inches	Width inches	Weight lbs.
edp 104	24.5"	19.75"	15.40

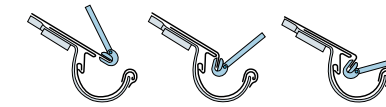
Indispensable to any sheet metal worker, especially for bending ridgeseam and sloping beads. Upright bead is built to 90° in two steps (45°-45°). Sheet metal held securely by leveraged eccentric while bending. Easily set sharp angle by pushing with foot or hand at base of jaws.

R TWIN-SEAM FOLDER

Item	Length inches	Width inches	Weight lbs.
edp 112	33.58"	6.32"	13.80



See unparalleled cost savings when working small roof areas and corner constructions. Manually create accurate lockseam just by spreading the levers. Applications start at 1.58" seam height.



R EAVES EDGER

Item	Length inches	Width inches	Weight lbs.
edp 105	9.84"	9.84"	3.70

Tool width of 9.88" allows quick and accurate sheet metal shaping for eaves, gutters, dormer windows, etc. Can add spacer at eccentric pivot to create edges in excess of 90°, e.g., for high lips and water beads at inner eaves.

R EAVES SHEET JAWS

Item	Length inches	Width inches	Weight lbs.
edp 106	15.80"	8.66"	4.60



For precision fitting of eaves, gutters, dormer windows, etc. Jaw width of 8.69" enables quick and accurate folding of eaves sheet. Axle held in place by split pins.





The most versatile seamer in roofing. Seam 1" and 1 1/2" panels to 180° or 90° locks, working with flat or curved panels. Ruggedly constructed Piccolo can perform six different operations.

PICCOLO SEAMER

for finishing seams

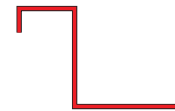
Number	Width inches	Length inches	Weight lbs.
PIC 25.38	12.2"	17.70"	50.60

BEND-BOY

for curving flanges & panels

Number	Width inches	Length inches	Weight lbs.
2788 01	6.69"	15.75"	30.30

Bend-Boy flanging machine curves U-panels for dormer tops and other trim. Produce convex curved sheets with repeated passes, 90° flanges up to 2" tall.



Perfect for rainy day work. Turn cheap scrap into standing seam 1" and 1 1/2" clips for fitting profile sheets. FHS does hole preparation, bending and cutting in one quick operation.

FHS FIXING PUNCHES

for 1" or 1 1/2" fixed clip

Number	Width inches	Length inches	Weight lbs.
FHS 1.0 in	6"	24"	6
FHS 1.5 in	6"	24"	6

LHS

for making fixing clips

Number	Width inches	Length inches	Weight lbs.
2785 04	6"	24"	6

Fixed clip maker for trim. LHS makes cleat in one quick punch that includes all necessary hole punching, forming and cutting.



The least expensive entry into metal roofing. Pre-cut material up to 22 gauge and feed through MPP in widths up to 28" for ready-to-install standing seam panel. Also runs tapered panels.

MINI-PROF PLUS

Number	Width inches	Length inches	Weight lbs.
2755 01	32"	36"	650



also from



METALFORMING
Architectural Machines



JORNS LONG FOLDER

JORNS is the industry leader in the production of long folders in 12, 13, 21, 26, 32 and 40 foot lengths. Every JORNS has the same high-precision folding accuracy, laser-cut and robotically welded frames, plus all-hydraulic, industrial-strength engineering. Easy thickness adjustment for snap material changes.



SCHECHTL MAX

10', 16-gauge folder with all-new, 3-D touch-screen control, featuring multiple graphic index for viewing/editing, and storage of 7,000 programs. With high-precision, high-speed backgauge, MAX is 15-20% faster, plus clamping beams 1/2-ton heavier for strength, rigidity and hemming uniformity. Quick-change material function adds to superior performance.



SCHLEBACH QUADRO-PLUS

Zip through 12 different profiles in no time, with flip of a cassette. Revolutionary Schlebach Quadro-Plus saves costly hours in changeover and makes perfectly rollformed panels - for 1" and 1.5" mechanical lock, snap seam, snap seam/nail strip, and U-panel, plus 2" structural mechanical lock. Includes slitting, tapering, cutting. Unprecedented 65 roll sets (ten year warranty), factory aligned cassette system, hybrid drive system for less oil canning. Extremely durable, portable, upgradeable.